

PARTS LIST - 4" x 3"

Port Valve

4" x 3"

Includes: 4" x 3"

Port RF Flanged CL 150 - 600

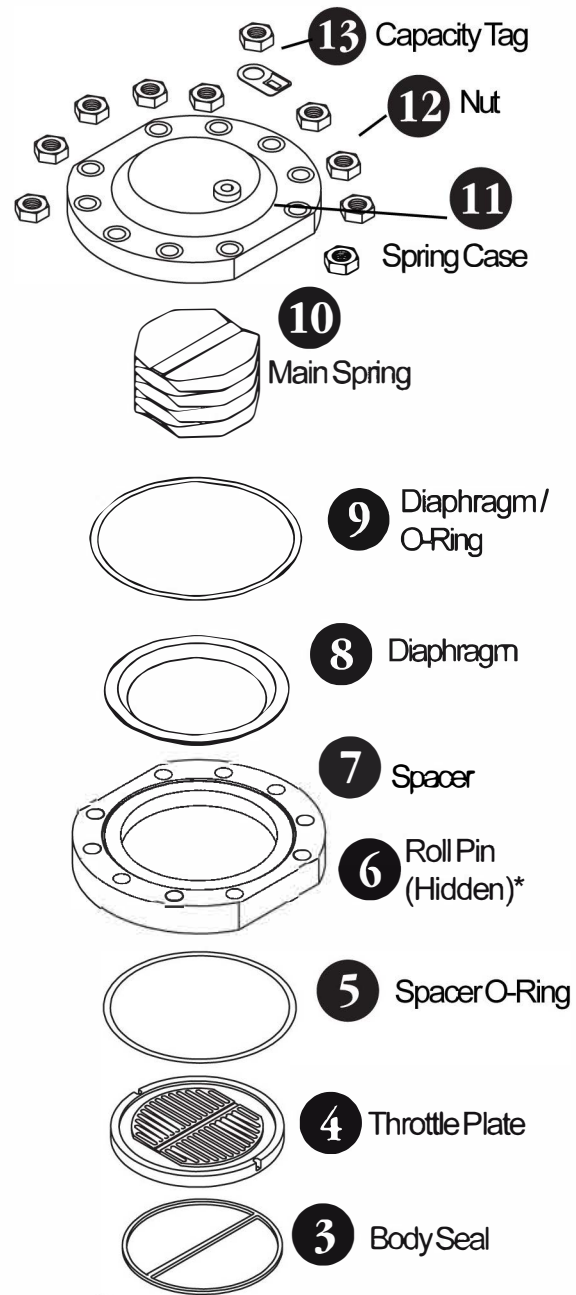
Port

Item	Description	Material	Part Number	Quantity
1	Body - Dual Port 4" CL 150 RF Flanged (FG-21)* 4" CL 300 RF Flanged (FG-22)* 4" CL 600 RF Flanged (FG-23)*	Carbon Steel (A216 Gr. WCB)	104-151-01 104-152-01 104-153-01	1
2	Stud (5/8UNC) 150 / 300 Class 5/8-11 UNC x 3.75 600 Class 5/8-11 UNC x 3.75	ANSI B-7	031-014-01 031-014-01	6 10
3	Body Seal	Nitrile	103-112-01	1
4	Throttle Plate 100% Capacity Flowgrid 75% Capacity Flowgrid 50% Capacity Flowgrid 35% Capacity Flowgrid	17-4PH SST 17-4PH SST 17-4PH SST 17-4PH SST	103-102-01 103-119-01 103-110-01 103-121-01	1
4a	100% Capacity Drilled Hole 75% Capacity Drilled Hole 50% Capacity Drilled Hole 35% Capacity Drilled Hole	A 515 w/ ENC Coating A 515 w/ ENC Coating A 515 w/ ENC Coating A 515 w/ ENC Coating	103-129-01 103-130-01 103-131-01 103-132-01	
5	Spacer / Body O-Ring	Nitrile	021-364-01	1
6	Roll Pin (3/16 x 1/2)	Steel	035-001-01	2
7	Spacer 150 / 300 Class 600 Class	Carbon Steel	103-106-01 103-107-01	1
8	Diaphragm 75 Durometer 60 Durometer 80 Durometer Hi-ACN 80 Durometer Lo-ACN	Nitrile / Nylon Nitrile / Nylon Nitrile / Nylon Nitrile / Nylon	103-105-01 103-105-02 103-105-03 103-105-04	1
9	Diaphragm O-Ring	Nitrile	021-262-01	1
10	Main Spring Standard Low Differential	301 Stainless Steel	103-111-01 103-117-01	1
11	Spring Case with Diaphragm Guide 150 / 300 Class 600 Class	Carbon Steel (A216 Gr. WCB)	103-103-01 103-104-01	1
12	Nut (5/8UNC) 150 / 300 Class 600 Class	ANSI 2H	032-003-01 032-003-01	6 10
13	Capacity Tag	Brass	100-013-01	1

Boxed items indicate recommended spare parts

† (FG-*) Indicates stock number for the Flowgrid Valve Assembly associated with each body

*Roll Pins (not shown in this view) mounted on the spacer ensure the proper alignment of the throttle plate



4a Drilled Hole Throttle Plate

